

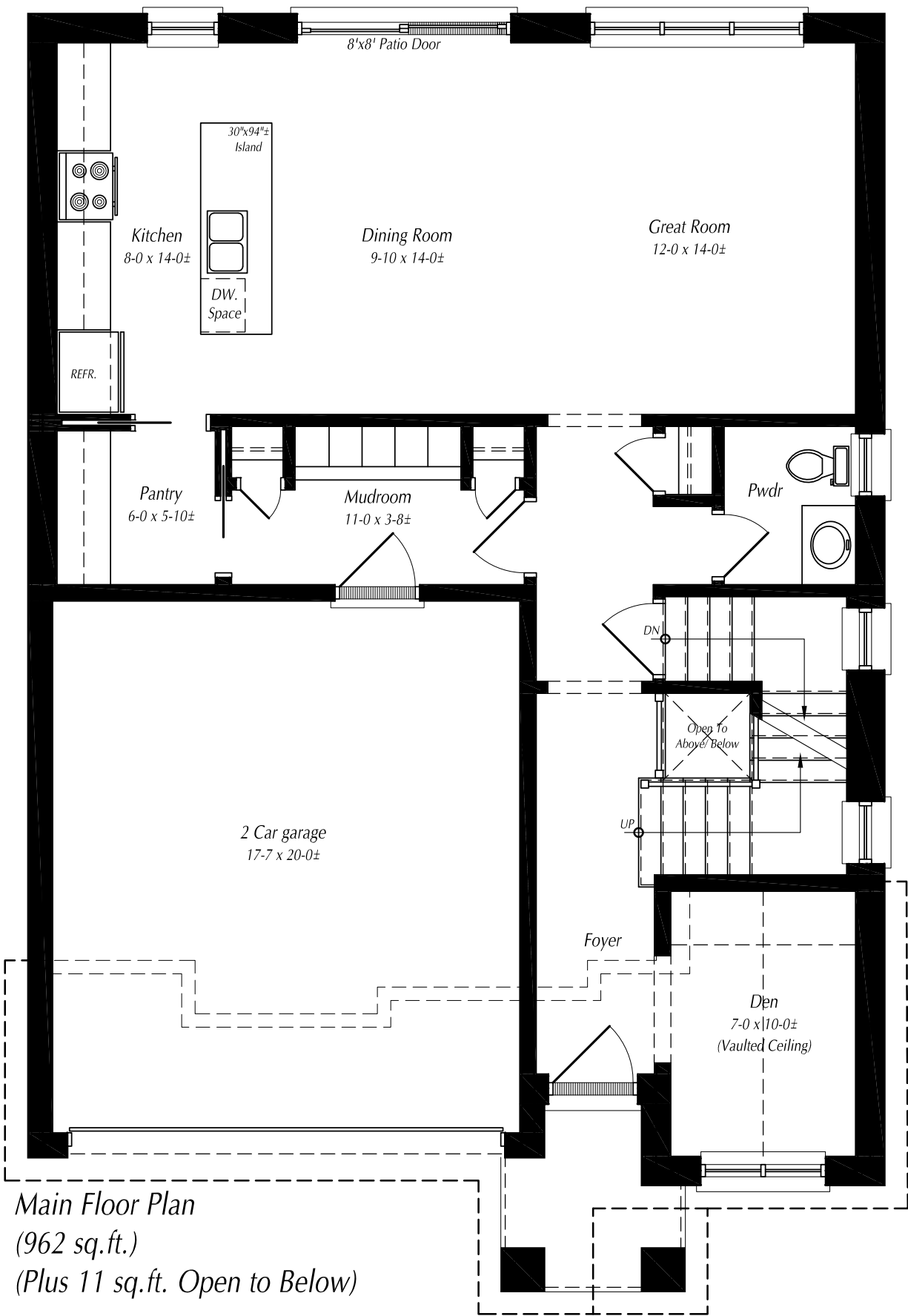


Front Elevation

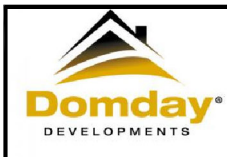


The

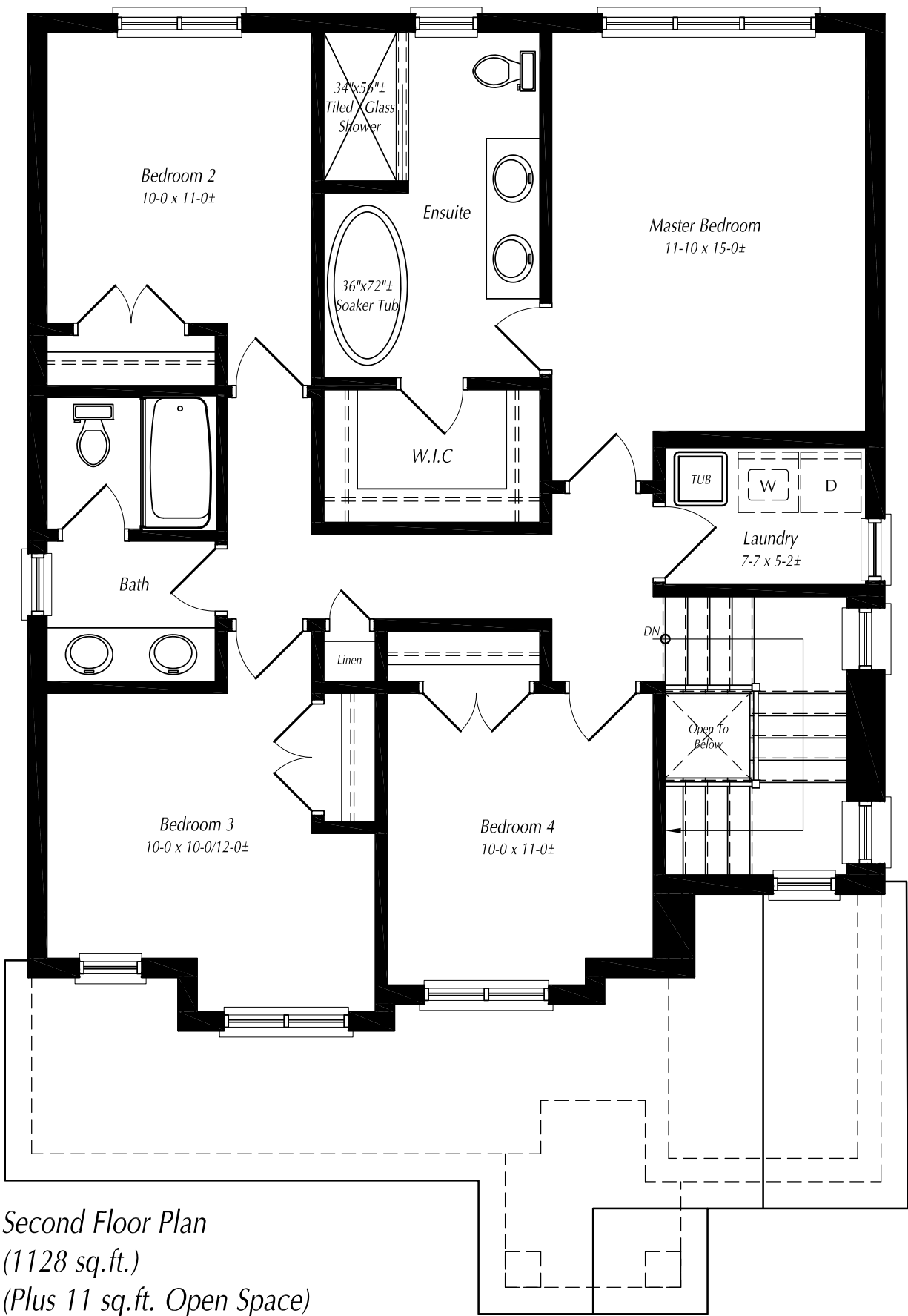
Oakwood
2090 SQ.FT.



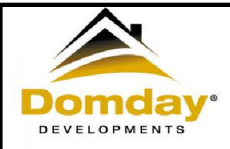
Main Floor Plan
 (962 sq.ft.)
 (Plus 11 sq.ft. Open to Below)



The **Oakwood**
 2090 SQ.FT.



Second Floor Plan
 (1128 sq.ft.)
 (Plus 11 sq.ft. Open Space)



The **Oakwood**
 2090 SQ.FT.

MAIN FLOOR AREA	- 962 sq.ft.
SECOND FLOOR AREA <i>(Does Not Include 11 sq.ft. of O.T.B.)</i>	- 1128 sq.ft.
TOTAL FLOOR AREA	- 2090 sq.ft.